

# All About Mosquitoes



# All About Mosquitoes



The Big Idea!

**Mosquitoes need water to complete their life cycle.  
No Water No Mosquitoes.**

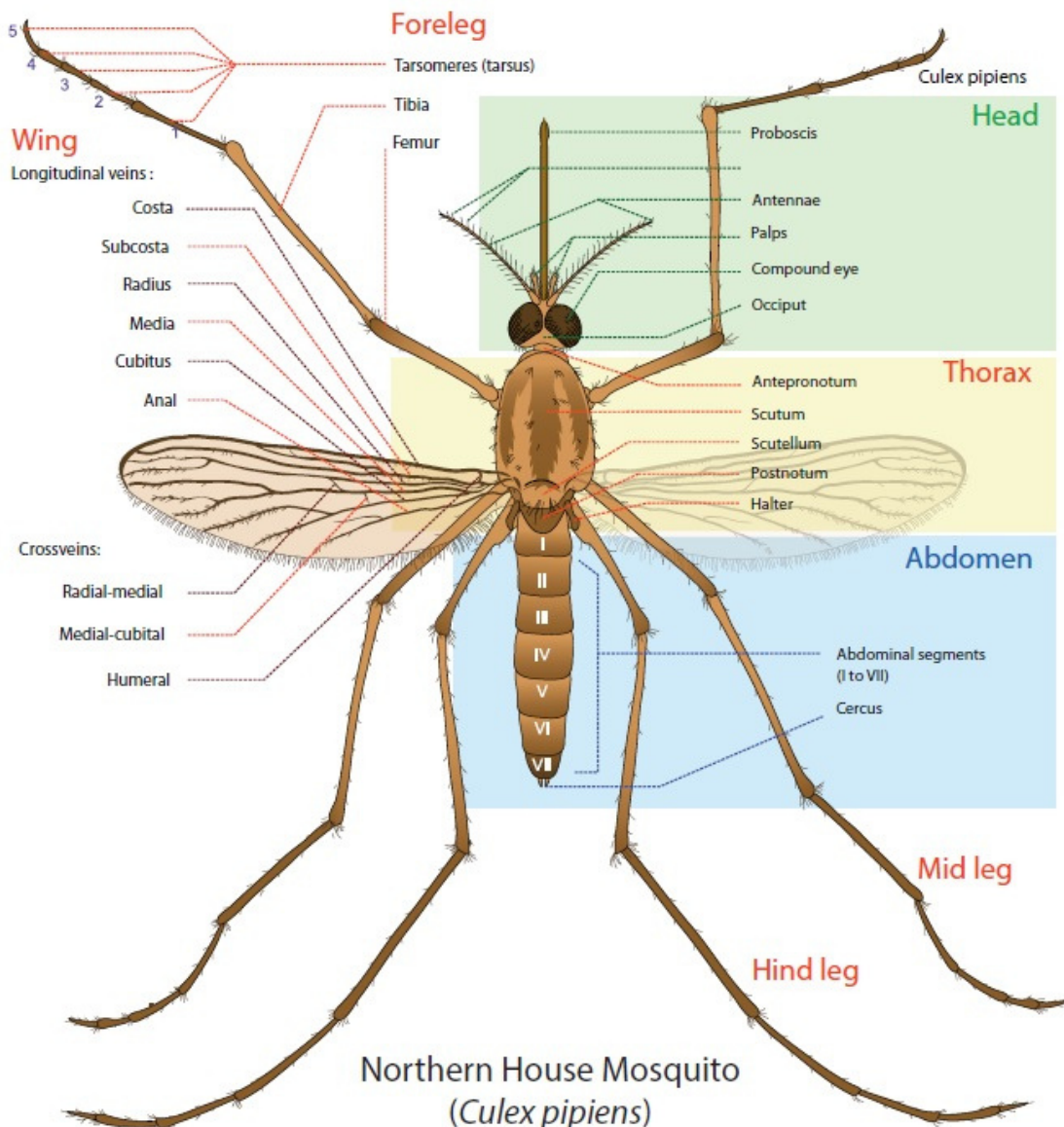


# All About Mosquitoes



There are 3,500 species of mosquitoes in the world, 58 in California, and 13 in the Coachella Valley.

Adult mosquitoes have three distinct body regions: head, thorax, and abdomen.

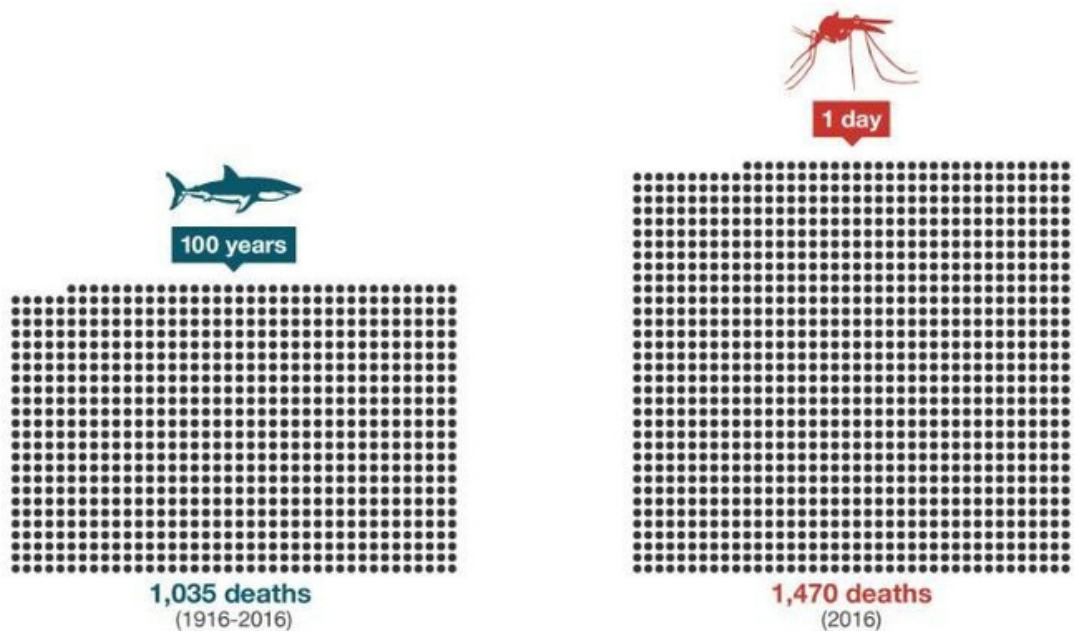




Talk about it

What is the deadliest animal in the world?

**Mosquitoes kill more people in one day than sharks killed over the last 100 years.**

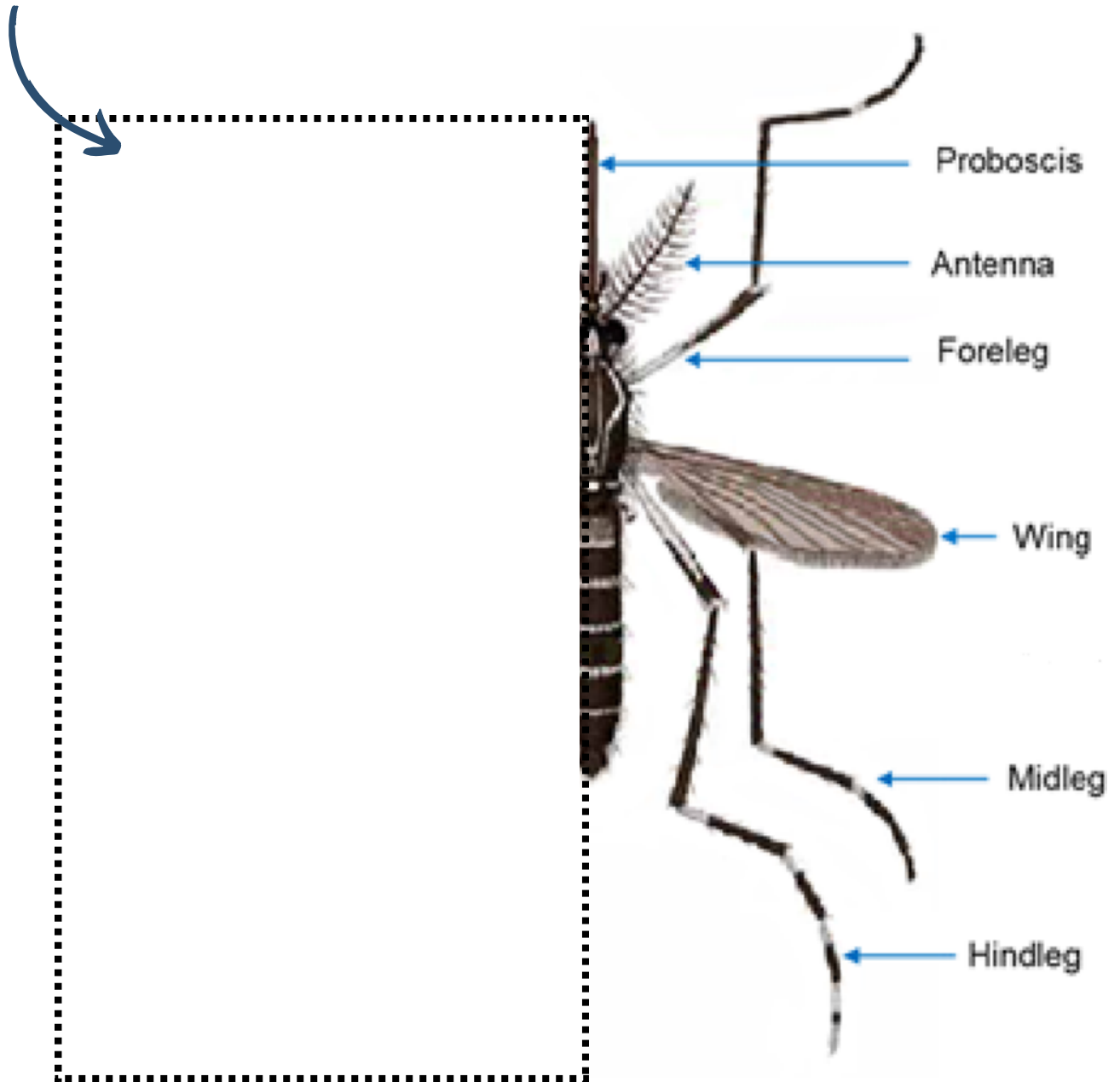


Source: WHO, Global Shark Attack File (GSAF)

**Did You Know?**

Only Female Mosquitoes Bite.

## Time to draw your mosquito



Why are Mosquitoes so deadly?

---

---

---

**There are four separate stages of the life cycle, each stage looks completely different.**

### **Stage 1- Eggs**

Eggs can clump together or be laid separately. Most eggs hatch within 48 hours after they are laid. Some can stay stable for much longer (Aedes eggs are laid separately and can stay dormant for years!) and hatch when there is water next to the egg. Warmer weather can speed up egg to adult process.

### **Stage 2- Larvae**

When mosquito eggs hatch, they enter a larval stage that lets them grow larger. They eat microorganisms from the water and continue developing their organs. They breathe through a long tube called a siphon, which they connect to the surface of the water. Larvae stay in this stage between 4-14 days, depending on many factors including weather temperature, water level, and amount of food available.



# Mosquito Life Cycle

## Stage 3- Pupae

When mosquito larvae enter the pupa stage, they become mostly still while undergoing major physical changes. During the pupa stage, mosquitoes do not eat, but they still need oxygen to survive. They use their siphon (trumpet) to breathe oxygen, and tumble into deep water when they sense a predator nearby.

## Stage 4- Adult Mosquitoes

Once mosquitoes complete the pupae stage, they emerge from the water and need to rest while their body parts harden, and their wings stiffen. Once they have the ability, they fly, sometimes as far as 20 miles, though most stay within a few blocks from the location of their birth.



# Mosquito Habitat



**Female**



**Male**



**Sketch a Mosquito Habitat**

A large, empty rectangular box with a red border, intended for sketching a mosquito habitat. The box is white and occupies the lower half of the page.